



**CALIFORNIA
ASSOCIATION OF
FOOD BANKS**

SUPPLEMENTAL NUTRITION ASSISTANCE PROGRAM (SNAP) **BRINGS FOOD & JOBS TO CA-33**



COVID-19 has underscored SNAP as our nation's largest and most important anti-hunger program, and the urgent need for continued investments to support the District.

Several temporary SNAP improvements have mitigated food insecurity during the COVID-19 crisis, but will expire when the federal Public Health Emergency ends. This will result in a significant hunger cliff for millions of people.

The Supplemental Nutrition Assistance Program (CalFresh in California) provides nine meals to every one provided by food banks — a gap that private charity could never fill.¹

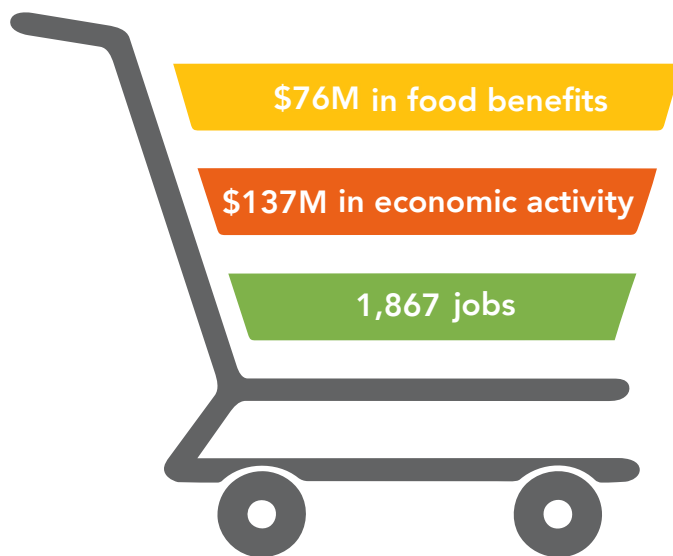


Yet, because SNAP benefits are inadequate, nearly 4 in 10 SNAP households still rely on food banks.²

The Value of SNAP

SNAP is crucial to the local economy. Last year, 29,900 participants – 4% of the District – received SNAP, ranking #51 in California.³

SNAP delivered to the District:^{4,5,6}



SNAP benefits are spent in and generate this economic stimulus at 273 authorized EBT retailers across the District.⁷

We call on the CA Congressional Delegation to continue the federal response to historic hunger from COVID-19: improve SNAP benefit adequacy, expand access for all low-income Californians, and prevent any benefits cliff.

Learn more: <http://cafoodbanks.org>

SNAP Benefits are Vital but Inadequate

This year, SNAP will help 4.4 million Californians fight hunger and escape poverty, but the benefits stop short of what is really needed.⁸ **In California:**^{9,10,11,12}



\$1.44

historically
allocated per
person, per meal



4 IN 10

rely on
supplemental food
from food banks



\$82

loss in SNAP, per
person per month,
when PHE ends



27%

increase in nutrition-
related hospitalization
risk at month's end

Historic Hunger

Right now, Californians are facing historic and devastating levels of hunger.

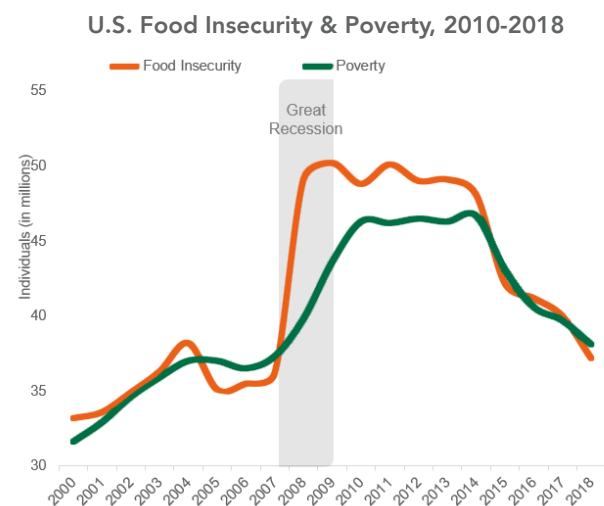
10 Million

Californians are food insecure. That's nearly one in five households (18%), almost double pre-pandemic (9.9%).^{13,14}

Deep Disparities

Compared to white households (12.9%), food insecurity is far higher among Black (23.1%) and nearly double in Latinx households (25.5%).¹⁵

Unprecedented Harm¹⁶



Impact of SNAP

*"I just wanted to say thank you for this program. I was feeling so ashamed to have to ask for help but now, after finding the application very easy to complete, I feel grateful knowing I will receive help soon and be able to get back on my feet again, thrive, and be able to help others again. With gratitude."*¹⁷

California food banks urge members of Congress to fully leverage SNAP's proven record as our nation's most important anti-hunger program for the duration of the economic downturn caused by COVID-19.



**CALIFORNIA
ASSOCIATION OF
FOOD BANKS**